



MS AMADEUS SYMPHONY

River cruises on Europe's most beautiful waterways



AMADEUS SYMPHONY, a member of the prestigious Amadeus Premium fleet, ranks among the most beautiful passenger vessels plying Europe's great rivers. Spacious cabins and suites fitted with every conceivable comfort, some with opening, panoramic windows, combined with a professional service and hospitality, lend a very special touch of luxury to the AMADEUS SYMPHONY. Additional facilities for discriminating passengers, such as a fitness room, a walking track, a putting green and the AMADEUS Club – a separate lounge with inviting, deep armchairs – give passengers plenty of space, and turn these exemplary ships into veritable oases of passenger comfort.



Reception



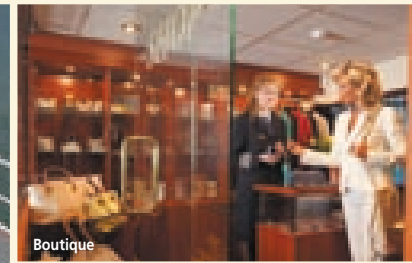
Sun deck



Amadeus-Club



Walking track



Boutique



Fitness room

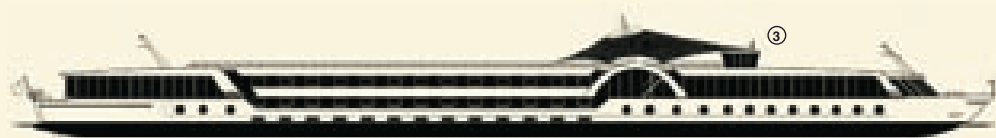


Restaurant

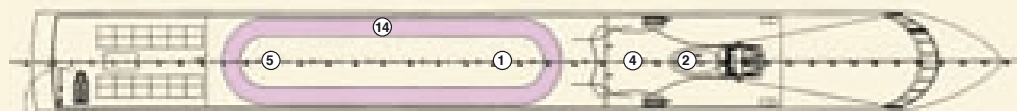
YOUR ON-BOARD FACILITIES:

69 staterooms and 4 suites (all outside, on Mozart-Deck and Strauss-Deck all cabins have a large panoramic window). Sun deck with the elegant white sun awning, with deck-chairs, Fun pool, Lido Bar, Walking track. Panorama Restaurant and Panorama Bar, Hospitality desk, Hairdressing salon, Amadeus Club, E-Mail station, Ships boutique, Fitness room

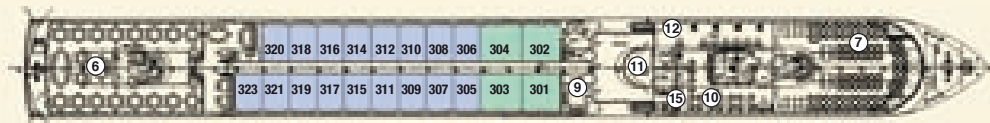
MS AMADEUS SYMPHONY PREMIUM



SUN-DECK



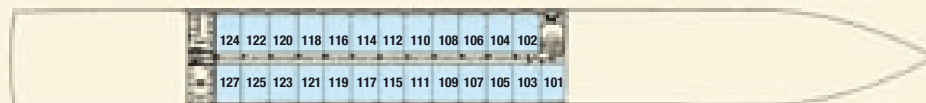
MOZART-DECK



STRAUSS-DECK



HAYDN-DECK



DECKPLAN: 1 Sun deck with deck-chairs · 2 Fun-Pool · 3 Navigation bridge
 4 Lido-Bar · 5 Game of chess · 6 Restaurant · 7 Panorama Bar · 8 Hairdresser
 9 Boutique · 10 Amadeus Club · 11 Reception · 12 Hospitality desk
 13 Fitness room · 14 Walking track · 15 E-Mail station

- Suite - Mozart-Deck
- A-1 - Mozart-Deck
- B-1 - Strauss-Deck
- C-1 - Haydn-Deck

CHOOSE YOUR CABIN ON "AMADEUS SYMPHONY"

Mozart-Deck	Suites	240 Sq.ft.	Sliding Panorama Window
	Category A-1	161 Sq.ft.	Sliding Panorama Window
Strauss-Deck	Category B-1	161 Sq.ft.	Panorama Window
Haydn-Deck	Category C-1	161 Sq.ft.	Fixed Window

TECHNICAL DATA:

Built in:	2003
Draught:	1,30 m
Height above water:	5,85 m
Length:	110 m
Breadth:	11,40 m
Speed:	25 km/h
Tonnage:	1.566 t
Crew members:	ca. 40
Cabins/Suites:	69/4



Cabin Strauss-Deck



Cabin Haydn-Deck



Bathroom

